



Regional Food Projects Dossier



RÉPUBLIQUE
FRANÇAISE

*Liberté
Égalité
Fraternité*

INRAE



Food and Regions: INRAE scientists supporting PATS (Regional Food Projects)

July 2023

In this dossier

compiled by **Giovanna Pinaud, Gisèle Parfait et Sylvaine Poret (DAPP),
Emmanuelle George, Sophie Madelrieux and Isabelle Duvernoy
(Département ACT))**



PAGE 4

Promoting regional agri-food systems: the emergence of *projets alimentaires territoriaux* or regional food projects

PAGE 6

Regional Food Projects and research: projects, tools and organisations

PAGE 8

Research projects helping to create *Regional Food Projects*

PAGE 12

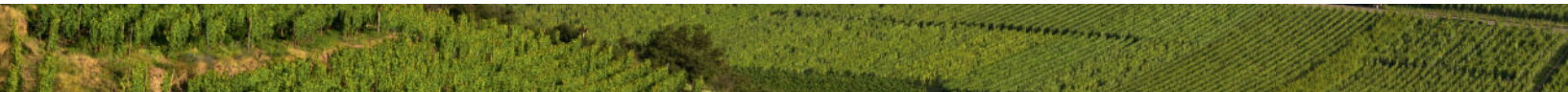
A supportive position: providing conceptual and methodological skills

PAGE 13

Research for *Regional Food Projects*: a perspective on the diversity of regional dynamics

PAGE 14

Research and *Regional Food Projects*: new perspectives



Acknowledgements

We would like to thank everyone involved with this dossier:

Grégori Akermann, Richard Bonin, Frédéric Bray, Pierre Casel, Yuna Chiffolleau, Florence Dodet, Nicolas Dumoulin, Baptiste Girault, Myriam Grillot, Pierre Guillemain, Sylvie Huet, Claire Lamine, Donald Lecomte, Salma Loudiyi, Phillipe Martin, Michel Mouléry, Claire Néel, Catherine Pavé, Coline Perrin, Caroline Petit, Manon Pradère, Cédric Prévost, Barbara Redingshöfer, Esther Sanz-Sanz, Céline Schott, and Christophe Soulard.

Public Policy Support Collection
Publishing Director: Nicolas de Menthière
Collection Director: Gisèle Parfait
Design and Editorial:
Giovanna Pinaud, Gisèle Parfait
Mock-up and layout:
 **EliLoCom** - www.elilocom.fr
Illustrations: Julie Borgese
Printers: Biprint



Involved in local communities for many years, INRAE researchers provide *regional food project* stakeholders with knowledge, methods and tools.

Food and Regions: INRAE scientists supporting Regional Food Projects

Over the last 60 years, food production, processing and consumption sites have gradually moved further and further apart: from farm to fork, distances have increased. Faced with this trend, little by little, regions have begun demanding the 'reappropriation' of their agri-food systems. Tailoring their work to local areas, INRAE scientists have been involved in these issues with local stakeholders, in particular the ACT (Science for Action and Transition) Department, for almost 40 years. In 2014, the rollout of 'projets alimentaires territoriaux' or regional food projects, a new local food policy tool, required a wide array of scientific knowledge and methods, which now involve several INRAE departments. This dossier is an introductory approach to INRAE scientists' involvement in implementing these regional food projects.

With the intensification of agriculture, industrialisation and the development of global trade, food has been standardised. This standardisation is accompanied by a loss of diversity in each region's food production. In the 1980s, the need to reconnect regions and their food systems emerged, so INRAE, who have been working for almost 20 years on the various themes of agri-food systems, set about accompanying regional evolutions.

From agricultural production methods to food processing techniques and the connection between food and local areas, their studies made it possible to offer support, with approaches incorporating research-action. 2014 saw the introduction of a new local food policy instrument: regional food projects (PATs) with the aim of relocating agriculture and food production in local areas. The rollout of these projects created new opportunities for dialogue between scientists



Christophe Soulard
Head of the ACT
Department,
Geographer, INRAE

The ACT Department (Science for Action, Transition and Regions) developed research into food territorialisation. It promotes a systemic view of food by analysing the logics involved — for stakeholders — in producing, processing, distributing, consuming and recycling food. The studies are based on fieldwork that identifies local initiatives and the frameworks that influence them, such as public policy. They are participatory, as they aim to understand and support the 'food movement' driven by multiple citizen, entrepreneurial, and institutional initiatives.

In this respect, regional food projects offer an appropriate framework for understanding the multiple facets of food territorialisation in France. This dossier identifies the diversity of research contributions, from scientific findings and accounts of experience to tools for action.

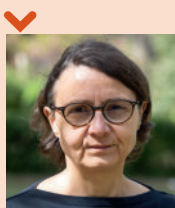
and local stakeholders. INRAE scientists were involved in developing, implementing and assessing these projects. This involvement feeds into research, facilitating the continuum between

local and research issues and creating collaborations that in turn feed into the regional food projects.

Far from being an exhaustive presentation, this dossier aims to highlight the

general dynamic of collaboration on these local projects, especially researchers' various positions from designing and accompanying the projects to assessing them.

➤ Promoting regional agri-food systems: the emergence of regional food projects (*projets alimentaires territoriaux*)



Yuna Chiffolleau
Research Director,
Sociologist

Since 2005, I've been studying short food supply chains as collective actions that allow for the construction of a more ecological, democratic and solidarity-based economy in our regions. These studies have helped define the outlines and objectives of 'regional food projects', introduced in the 2014 *loi d'avenir agricole* (future farming law). Since then, I have been focusing on their rollout and their assessment to support public policy as well as local stakeholders. For example, in the TERRALIM programme, studying 12 food projects in the Massif Central enabled us to produce 2 best practice guides for PAT project leaders. They suggest, for example, involving consumers in defining specifications for supermarkets offering local vegetables, an action implemented in the PAT led by the Grand Clermont and Livradois-Forez Regional Natural Park.

While PATs have huge potential, they often involve the same types of stakeholders. At best, citizens are consulted, but they rarely take part in decision-making. Rethinking the governance of PATs is a crucial issue to co-design innovations adapted to the regions and accelerate the transition of food systems.

In the 1980s, in response to the standardisation of food, new public policies emerged to promote local farming and the connection between produce and *terroir* by defending local breeds and products of controlled origin, the notion of 'pays' (area), followed by regional contracts, etc. - all signs of a desire to protect and promote regional professions and activity. At the turn of the millennium, numerous local initiatives sprang up on the question of short food supply chains. In 2010, the Ministry for Agriculture launched the PNA, France's National Food Programme. The issues of local food production in relation to regional development were therefore

incorporated into national policy. The 2014 *loi d'avenir pour l'agriculture, l'alimentation et la forêt* or Law on the Future of Agriculture, Food and Forestry created *projets alimentaires territoriaux* or regional food projects, a tool for strengthening and promoting food systems rooted in regions. In the context of the National Food Programme, these projects bring together stakeholders around a common regional food project, addressing local social, environmental, economic and health issues. With these regional food projects, the public authorities aim to strengthen local supply chains by putting agriculture and food back into the heart of the regions.

PATs: multiple formats, leaders and themes

In line with the National Food Programme's objectives, *regional food projects* were initially focused on farming, land, short supply chains and institutional catering. The Covid pandemic helped broaden the field of actions supported by the call for projects in 2022 to emphasise issues of food access and food insecurity.

PATs can be led by any public or private not-for-profit organisation responding to food issues. In reality, the vast majority is led by local authorities, especially by project areas or through inter-municipal cooperation.

After the implementation of the France Relance Plan in 2021, the budget devoted to the call for PATs was multiplied threefold compared with previous years. Since then, the number of PATs has doubled with the launched of 151 new PATs. In early 2023, the MASA (Ministry for Agriculture and Food Sovereignty) had approved 387 PATs. Almost every department in France has or is in the process of launching at least one PAT.



Three questions for Cédric Prévost

Deputy Director of Food and Agroecological Transition Support,
Ministry for Agriculture and Food Sovereignty



What were the Ministry's hopes for PATs, these public food policy tools?

Regional food projects are defined by the law, with a framework specifying the major points and main objectives while not being a rigid scheme (articles L1-III and L111-2-2 of the Code rural et de la pêche maritime), making them innovative measures to implement public policy as part of the growing and voluntary approaches of local stakeholders. The public authorities have been supporting these projects with the PNA's call for projects since 2016, and then by introducing a certification scheme in 2017. With the Covid crisis, PATs have emerged as a key tool for developing food resilience in local areas by promoting the local anchoring of food, hence the implementation of a dedicated measure to support them as part of the France Relance plan. The number of PATs has grown from 41 at the end of 2020 to more than 400 in 2023.

What is the need for scientific knowledge for public policies on local food in general, and PATs in particular?

The Directorate-General for Food, and in particular the Sub-Directorate for Food and Agroecological Transition Support, develops, implements and assesses its public policies in close collaboration with scientific experts. In particular, with regard to health issues, the French Agency for Food, Environmental and Occupational Health & Safety (ANSES) is regularly called upon to assess food-related health risks to inform public decision-making. The relationship with INRAE is equally valuable, whether via the Food Observatory, the production of collective structural expertise or relations with certain researchers on targeted themes including PATs. PAT support is designed empirically, with the introduction of a 'national network of PATs' project, initially

steered by the Terres en Villes association, which was then joined by Chambres d'agriculture - France. This project includes a research component within the framework of the National Observatory, with INRAE associated with the technical and scientific committee of the national PAT network (RnPAT). In addition, the 'local food' joint technology network (RMT) contributes to PAT-related work.

Nevertheless, PATs are long-term projects and have only recently been the subject of research, in some regions at least. It's now necessary to gather together and share existing data to characterise them better. There is a growing need to assess and measure the impacts of these projects in our regions, their social, health, environmental and economic impacts, because, at the moment, these topics remain underexplored.

Having been deployed for a few years in the regions, what does the future hold for PATs?

As has been very well highlighted by the recent report from Senator Frédéric Marchand, the PAT scheme has been acclaimed by the majority of stakeholders. Nevertheless, at this stage of the projects' rollout (most of them are still the emerging phase), it remains necessary to strengthen, structure and expand the movement. Without this, and without making human and financial means available, the danger is that the dynamic will lose its impetus after the momentum built up as part of France Relance.

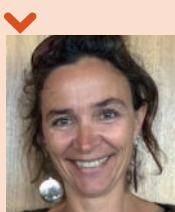
As part of the ongoing consultations to develop the National Strategy for Food, Nutrition and Climate (SNANC), particularly through the National Food Council, PATs are cited as drivers to be sustained and strengthened. After a phase of regional rollout in recent years, their reinforcement, by expanding their operational activities, should therefore play a key role in the implementation of the SNANC guidelines through the actions of future PNA and PNNS programmes.

➤ Regional Food Projects and research: projects, tools and organisations

Regional food project leaders and researchers are often called upon to collaborate in diagnosing, implementing and coordinating projects. PATs, which can include different levels of agri-food systems, agricultural production,

supply chains, food and health, etc., are linked to multiple research fields and increasingly involve INRAE departments. INRAE scientists are thus still involved in numerous partner or participative research projects connected to PATs. These projects illustrate a three-pronged research position: upstream of public policy, through close involvement in local areas and designing future pathways; during the implementation of regional food projects, by providing knowledge and tools; and by assessing these policies. Their contributions can take various forms: local area assessments, methodological input, facilitating consultation and governance processes, etc. They have also enabled a wide range of tools to be developed, including regional information systems, observatories, and modelling and simulation tools, which provide support to regional food

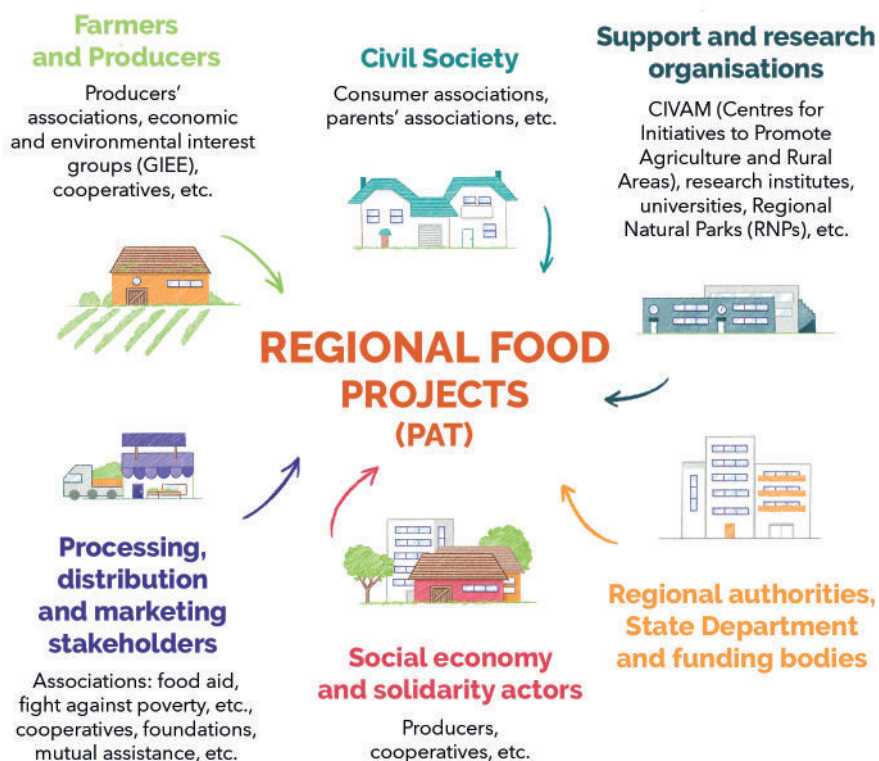
project leaders. From sector analysis to regional planning issues including food insecurity assessments, these numerous tools can be used throughout the PATs' 'lives' during their development, implementation and evaluation phases. With their studies and local involvement, scientists have found themselves at the heart of, or associated with, a large number of national networks and organisations – the national network of regional food projects (RnPAT) or joint technology network (RMT) for 'local food' – but also local ones: scientific advisory boards, local food councils, etc. Their involvement in these networks has a dual purpose: for research, their position as active observers helps foster links with issues in the field and identify knowledge needs, and for public actors, these organisations provide scientific support in the form of methods, tools, etc.



Claire Lamine
Research Director,
Sociologist, INRAE

I study the greening trajectories of farmers, public policies and regional agri-food systems. In 2015, I brought together a collective of stakeholders in South Ardeche to design an action-research project about ecological transitions and the reconnection between agriculture and food. The 'Assiette et le territoire' project came into being in 2019, led by INRAE, 2 local authorities and 2 associative networks. Its analyses have supported several PAT application dossiers.

Our current research, as part of an international network (the European ATTER project), shows that PATs, as a means of public action, encourage the involvement of a variety of local actors concerned with defining desirable transition pathways. However, the issue of greening is not always at the forefront, and inclusion and participation are still major challenges. In continuing our work in Ardeche, we're adopting a dual approach of analysing the dynamics at work in the PATs and conducting action-research, for example by running a local food council, a forum for exchange linked to an annual citizens' forum. This enables us to develop new research questions with the local stakeholders.





Three questions for

Donald Lecomte

Policy officer, National Food Programme (PNA)

On behalf of the Regional Directorate for Agriculture, Food and Forestry (DRAAF) Occitanie



What are the advantages of PATs for regions in general, and Occitania in particular?

Regional food projects mean that the region launching the project can roll out numerous actions based on the issue of sustainable, high-quality food. In this regard, PATs generally encompass wider social, cultural, economic and environmental objectives.

Changing agricultural and food models represents a long-term undertaking that inevitably involves a network of stakeholders and has to bring together diverse and complementary skills. In the Occitania region, more than 60 PATs are trying to create an environment that fosters the local anchoring of food.

What's the DRAAF's role in Occitania's PATs?

In Occitania, a particularly fragile agricultural region that's vulnerable to climate change, and with a very wide variety of productions, local areas were already discussing food issues well before the arrival of the regional food projects. The DRAAF, already very active with regard to these issues, headed the launch of PATs in 2014.

We intervene in different stages of these projects, from accompanying them when they're designed and examining dossiers for funding requests through to assessing their success. Our role is to

be facilitators, providing information to PAT project leaders and enabling them to find supplementary funding. We support fundamental projects that promise lasting change for food systems.

With the Government's France Relance plan in 2021, we were able to give a massive boost to PATs thanks to an exceptional funding capacity totalling 12.5 million euros for Measure 13, almost 25 times our usual annual budget.

What contributions do scientists make to these PATs?

Research has a strong connection with regions, especially in the context of PATs. It provides technical skills and supports the projects' management and assessments. Moreover, scientists' involvement is a criterion to access a certain level of certification.

In reality, these PATs represent laboratories that make it possible to design and apply innovative food policies, and research offers support for this innovation, be it organisational or technological. In Occitania, the DRAAF is in contact with countless scientists, including INRAE researchers, and co-funds several research projects and Cifre (industrial agreements for training through research) theses on PATs. For example, we're co-funding an INRAE project to develop OUTIPAT'OC, a diagnostic and monitoring tool to help regions implement, steer and assess PATs in Occitania.

➤ Research projects helping to create *Regional Food Projects*

Local studies carried out by researchers actively participated in creating several *regional food projects*. While the primary goal was not to set up a PAT, the emergence of new dynamics arising from these action-research projects was a first step towards what was to become a *regional food project*. Among other things, these studies mobilised and organised collectives and networks involved with issues relating to a region's food system. This new governance thus enabled the transition to implementing concrete actions by creating PATs.

A GOVERNANCE STRUCTURE LEADING TO THE PAT FOR GRAND CLERMONT AND THE LIVRADOIS-FOREZ PARK

In the context of the INVENTER project, the collective dynamic that emerged led the Grand Clermont PETR (*Pôle d'équilibre territorial et rural* or regional

and rural balance centre) and the Livradois-Forez regional natural park (RNP) to design a joint food project with support from researchers. In 2016, they were therefore able to apply for a PNA (National Food Programme) call for projects.

Subsequently, the PAT was one of the subjects observed as part of the INVENTER project, with real-time monitoring of its construction. Workshops involving a wide range of stakeholders enabled researchers to highlight the terms of participation, debates, evolving issues, etc. The results led Grand Clermont and the RNP to review their approach to the PAT by taking a more comprehensive view of food and broadening the project's governance. Following the INVENTER project, a researchers' collective was set up. The members of the Clermont-Ferrand unit contribute to strategic orientations, provide knowledge on regional and sectoral challenges, and evaluate the PAT's governance. Five initial research themes

have already been identified to guide the work of the research committee.

DEVELOPING SEVERAL PATS IN SOUTHERN ARDECHE

The action-research project *L'assiette et le territoire* (the dish and the region) was constructed on the basis of a long-term partnership with stakeholders from the southern Ardeche area.

As part of this project, an analysis was carried out to enrich discussions on food prospects promoted by the Monts d'Ardeche Regional Natural Park. The results of this analysis were used to support applications for several inter-municipal *regional food projects* in 2021. The 'plenary' group of 25 stakeholders representing the different segments of the system created for the project was eventually transformed into a *local food council* which considers how to implement the agri-food transition in southern Ardeche, including through PATs.



National networks and local organisations involved in regional food projects

THE NATIONAL NETWORK FOR REGIONAL FOOD PROJECTS SUPPORTING PROJECT LEADERS

The RnPAT (or national network for regional food projects) was set up in 2014 with the aim of analysing the PAT scheme, facilitating experience-sharing and co-construction within the network of project leaders, and making tools available. Funded by the Ministry for Agriculture, it is co-steered by Terres en Villes and France's Chambers of Agriculture. The RnPAT is a meta-network based on the Collective Mobilisation for Rural Development projects of the French rural network.

Since its creation, the National PAT Network has been collaborating with the research community, particularly INRAE, to obtain methodological and conceptual support and to develop tools tailored to project leaders' needs.

THE 'LOCAL FOOD' JOINT TECHNOLOGY NETWORK: PROMOTING SCIENTIFIC KNOWLEDGE

In 2015, stakeholders' interest in and questions concerning 'short, local food chains' and sustainable food led to the creation of a 'Local Food' Joint Technology Network (RMT). Funded by the Ministry for Agriculture and affiliated with the ACTA (technical agricultural institutes), it brings together around thirty research, development and training professionals. The RMT leads a mission to transfer scientific knowledge and is a relay for applying scientific methods and tools in the field.

Although not devoted to regional food projects, the RMT represents a resource centre for PAT project leaders because of the themes it addresses. The 'Local Food' RMT also offers a selection of research & development projects involving short local food supply chains and related topics, which support the discussions of 6 RMT working groups.

RESEARCHERS' INVOLVEMENT IN LOCAL ORGANISATIONS: FROM ADVICE TO SUPPORT

From scientific advisory boards to steering committees

After their interactions with researchers in the field, some PAT leaders wanted to include INRAE scientists on their steering committees. The purpose of these committees is to prioritise and validate the PAT's objectives and focus areas, as well as its governance, the organisation of its working groups and its schedule. In conjunction with the steering committees, some PATs have set up scientific advisory boards. These boards vary in size and are made up of researchers and local specialists in different disciplines.

On the request of stakeholders, research provides a scientific framework and ensures that the innovations and challenges of the ecological and social transition are taken into account in the PAT. This scientific support also allows for an observational and analytical perspective on the projects' methodology and progress of its process. For researchers, these organisations offer a new opportunity to link issues in the field and research.

Local Food Councils

In some regions, long-term organisations have been set up for consultation, monitoring and implementing PATs, such as Local Food Councils (LFCs). They cover the various themes of food systems and bring together a wide range of the region's stakeholders involved in food: public decision-makers, scientists, associations, citizens, etc. They may be launched by regional authorities, or, in the case of the Ardeche, an independent organisation. Experience shows that, in terms of their composition and mobilisation phase, particular attention must be paid to the balance between institutional and economic actors (associations and citizens), as well as to the mix of stakeholders 'mandated' by structures and those 'concerned' by the issue (citizens, farmers, chefs, etc.).

INRAE researchers supporting regional food projects: spotlight on a selection of research projects

THE PSDR INVENTER PROJECT (2016-2019)

<https://www.psd-r-inventer.fr/>

 **UMR Territoires**

 **14 Partners**

 **Auvergne Region**

Incorporated in the PSDR (research programme for and on regional development), the aim of the action-research-training project 'INVENTER' was to develop new forms of regional governance for food systems. INVENTER studied how collective actions are coordinated and how governance processes are managed, along with the regional setups that boost the emergence of innovative local initiatives. The deliverables produced support stakeholders in implementing collective actions, enabling them to better identify the measures to put in place, lessons to be learned and new methods of collective work.

To find out more:

Presentation of the project in videos. Digital study: [Comment adapter et hybrider les démarches participatives dans les territoires ?](#) or 'How to adapt and merge participative approaches on the regional level'

FOODSCAPES PROJECT (2017-2021)

 **UMR MoISA & Innovation**  **7 partners**

 **Agropolis Foundation, Occitanie Region & Montpellier Méditerranée Métropole**

In collaboration with the City of Montpellier, INRAE researchers developed the 'Foodscapes' project. Its objective was to analyse the effects of the diversity of foodscapes in cities — grocery shops, markets, community vegetable gardens, etc. — on food consumption, representations and practices. Several focal points were developed: the geography of foodscapes, the impact of community vegetable gardens, and the 'Mont' Panier' survey on households' purchasing behaviours.

To find out more:

[Final assessment of the Foodscapes project: understanding residents' foodscapes. The project's findings in videos.](#)

L'ASSIETTE ET LE TERRITOIRE (THE DISH AND THE REGION) PROJECT (2019-2021)

 **Ecodevelopment Unit**

 **5 partners**

 **Fondation de France**

The action-research project 'L'assiette et le territoire' (The dish and the region) brought together INRAE, the Monts d'Ardeche RNP and the southern Ardeche area along with two associative networks: the CIVAM and the collective Pétales07. The study of the transition of the regional agri-food system in

south-central Ardeche took several forms: trajectory analyses, design workshops, public meetings on institutional catering, etc. The project collective, made up of 25 people representing the different links in the regional food system, co-wrote a historical analysis of the trajectory of this system, a manifesto entitled Pour une transition agri-alimentaire juste et écologique en sud Ardèche (For a fair and ecological agri-food transition in southern Ardeche) identifying the major challenges of this transition, and a film recounting the action research. It is also behind a local food forum, which is now held annually.

To find out more:

[Project summary. Concrete resources for action. Summary of local food forums in South Ardeche.](#)

SCALABLE PROJECT (2021-2024)

 **LESSEM Unit & UMR Agir**  **5 partners**

 **Ademe**

The 'Scalable' project aimed to better understand the metabolism of the agri-food system (AFS), meaning the flows of materials and energy involved in its operation and the organisation of economic operators. It followed on from the Boat and AF Filières projects to study in greater depth the issue of the material and organisational vulnerabilities of AFSs, especially for supply chains. It was rolled out on three scales: national, regional and for the Greater Grenoble Area PAiT. With regard to the PAiT, extensive field research is currently being conducted among farms and operators transforming the dairy, meat and arable farming sectors. This will be used to prepare workshops on the vulnerabilities of these sectors and the AFS, and the possible courses of action at different organisational levels. The project also aims to consolidate a regional AFS diagnostic tool set up in the Boat project: SI-BOAT (see page 16).

To find out more:

Full presentation of the SI-BOAT tool

SEREALINA PROJECT (2021-2026)

 **UMR ETTIS**  **19 partners**

 **Ademe & Nouvelle-Aquitaine Region**

The 'Serealina' project focuses on the issues of food security and resilience in the Nouvelle-Aquitaine region. It has a dual goal: on the one hand, diagnosing the system and food security of areas in Nouvelle-Aquitaine, and on the other, identifying drivers for greater food security and more sustainable regional development. The analysis of the resilience and sustainability of food systems will be carried out on three levels: the region, the stakeholders involved in food systems, and the areas that make up the region. The PAT analysis component is being led by INRAE. Although still ongoing, the project has already enabled a diagnosis of the food system in Nouvelle-Aquitaine to be made.

To find out more:

Diagnosis of Nouvelle-Aquitaine's food system: study and video

GATO PROJECT (2020-2022)

 **UMR Agir & Innovation**  **Occitania Region**

GATO PROJECT (2020-2022)

The 'GATO' project made it possible to analyse the variety of candidates responding to the PNA call for projects thanks to an agreement with the DRAAF Occitanie. It examined the dynamics of governance that formed the bases of 5 regional food projects on varying topics and with degrees of development. 2 were led by municipalities, the cities of Albi and Castelnaudary, and 3 by 'groups of municipalities': Greater Narbonne Urban Community, PETR Pays Coeur d'Hérault and the Albigeois and Bastides Territorial Cluster. It also provided an opportunity to study the emergence of new players in the processing sector for the supply of institutional catering, vegetable processing plants, and stakeholders' involvement in the fight against social insecurity. The findings of these various studies were presented during a webinar open to survey participants and all PAT project managers in the Occitania region.

To find out more:

Project summary

TORSADES PROJECT (2019-2021)

 **Aster Unit & UMR SADAPT**

 **Programme INRAE/CNRS MUTALIM**

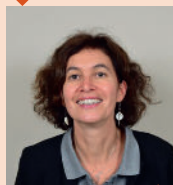
The objective of the 'Torsades' project was to specify the methods, impacts, constraints and drivers in reconnecting sustainable agricultural production and food consumption. A method to analyse local food systems was developed to take into consideration the flow of exchanged materials and the diversity and spatial organisation of farms, along with their marketing channels and relationships between local stakeholders. The project drew on three contrasting situations in north-eastern France: the western suburbs of Paris, the Brie region known as 'laitière' (dairy region) and the western Vosges. The work enabled discussion of the analysis of the current situation and alternatives for reconnecting agriculture and food with a wide range of stakeholders in the three regions.

To find out more:

The project in 9 summary sheets. Booklet summarising the seminar on interaction between researchers and stakeholders from the three regions.



Richard Bonin
Head
of the Culture
& Sustainable
Economy
Department
Monts d'Ardeche
Regional
Natural Park



Florence Dodet
Former project
manager
for agriculture,
forestry
and exemplary
rural urban
planning and the
Valeurs brand
Monts d'Ardeche
Regional
Natural Park

Our RNP has been addressing food issues since 2010. As an RNP, we have an experimental mission and a scientific advisory board, and therefore very strong links with research. As such, we quickly enlisted the help of scientists, particularly sociologists, to accompany our region in implementing its food policies. With INRAE, a privileged partner with regard to food, we collaborated on a regional food forecast study and a research project, 'l'Assiette et le territoire', focusing on governance and food trajectories. These 2 approaches greatly contributed to designing regional food projects, which didn't exist in the Ardeche until 2019. Since our RNP wasn't a population catchment area, we decided to support the emergence of PATs in inter-municipalities rather than lead them ourselves. Today, 8 of the park's 10 inter-municipality associations have PATs.

With regard to research, the Park is committed to supporting inter-municipalities by, for example, funding Cifre theses and the international ATTER project to develop a territorialisation network. Addressing these questions from a research angle is also a way of gaining knowledge and understanding.

➤ A supportive position: providing conceptual and methodological skills

Scientists rallied together to provide support for the creation and implementation of regional food projects. These research projects for PATs have been developed in line with the needs of local stakeholders in the field. With these new methods of interaction between researchers and stakeholders, scientists have strengthened their role supporting processes and producing knowledge for action. This research has mobilised stakeholders and the population to co-develop a regional food strategy.

MONTPELLIER MÉDITERRANÉE MÉTROPOLE'S FOODSCAPES

As part of the development of Montpellier's regional food project, the city sought to identify the drivers for action at its disposal to support its residents in adopting healthy and sustainable eating habits, taking into account social and spatial inequalities in access to food. As part of the *Foodscapes* project, analysing the links between food landscape diversity and eating habits enabled the metropolitan area to draw up

urban development and commercial planning strategies. The research findings identified certain elements of the landscape that have a positive influence on eating habits, such as the presence of greengrocers.

VULNERABILITIES OF THE GREATER GRENOBLE AREA PAiT'S AGRI-FOOD SYSTEM

The *Scalable* project was designed to study in greater depth material and organisational vulnerabilities on a regional scale, in this case, the scope of the inter-territorial food project (PAiT) for the Greater Grenoble area.

The SI-BOAT regional information system was used to conduct an initial assessment of the PAiT agri-food system. The project brings together members of the PAiT, INRAE, INRIA, AuRA-EE and the company Terriflux. The PAiT coordinator is a member of the Scalable project steering committee, while the Scalable project coordinator participates in PAiT steering committees and working groups, particularly those focusing on the overview of the PAiT agri-food system.

Ici.C.Local (It's local here), an INRAE brand promoting local produce

In 2008, the municipality of Grabels (Hérault) decided to set up a market to reinvigorate its town centre and quickly called upon INRAE (UMR Innovation). Alongside the municipality, the researchers designed the brand Ici.C.Local to highlight and promote local short-supply-chain products. *Ici.C.Local* is a collective brand coordinated on a national level by INRAE and managed in the various regions by local representatives: chambers of agriculture, local authorities and even consumer associations. The brand is a tool for dialogue and cooperation for short supply chains and is becoming a key tool for PATs. Already rolled out in numerous municipalities in the Hérault, Aveyron, Var, Gard, Ardeche and Haute-Garonne departments, Ici.C.Local is also being deployed in larger cities via their PATs.

➤ Research for *Regional Food Projects*: a perspective on the diversity of regional dynamics

In addition to their involvement in the emergence and development of regional food projects, scientists are interested in these regional food projects as subjects of research. Their work focuses on analysing PATs, establishing connections between or comparing various PATs, and even comparing their implementation and governance methods with those of public policies in other countries.

The scientists' position as observers enables them to offer a critical perspective on the dynamics and implementation methods. The matter of PATs' governance, a key issue in their effectiveness, has been extensively studied by researchers.

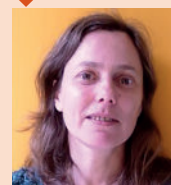
The findings of these studies contribute to local dynamics. Analysing their methods and governance as well as sharing knowledge and methodological elements can encourage the construction of new regional projects.

FOOD DYNAMICS GOVERNANCE IN OCCITANIA

The *GATO* project has made it possible to analyse interactions developed or promoted by five regional food projects in Occitania: types of stakeholders, components of the food system, locations and scales, etc. This project identified civil society's close involvement in local food initiatives. Associations accounted for nearly half the proposals for action in the food sector in the PNA's calls for projects in Occitania before 2020. Their involvement in the governance of the regional food projects studied often appeared to be more limited and peripheral, partly due to a lack of resources and time. Ultimately, this research project highlights the need to strengthen the links between the various food reterritorialisation initiatives for better governance.

ANALYSING SUSTAINABLE AGRI-FOOD SYSTEMS IN NORTH-EAST FRANCE

The research project *Torsades* enabled an analysis to be made of the agri-food systems of 3 areas in the north-east of France. In 2 of these areas, the scope of the study was the PAT with the case of the Saclay Plateau west of Paris and a PAT under preparation covering 4 municipalities in western Vosges. It helped support local stakeholders' discussions by offering (in the form of synopses) keys to understanding their own region, either individually or in comparison with 2 other field studies. As part of this project, the *recensement géolocalisé des exploitations agricoles en transition à l'échelle du territoire* (or geolocated census of farms in transition on a regional scale: ReGATERR®) method was tested. Its aim was to analyse agri-food system actors and their interactions in the area of western Vosges' future PAT.



Isabelle Duvernoy
Research Fellow,
Geographer, INRAE



As a geographer, I study the transformation of agricultural systems in urban and peri-urban areas.

From 2020 to 2022, I studied the impact of regional food policies in the Occitania region within the framework of the *GATO* project with researchers from the Agir and Innovation UMRs. Analysing the organisation of 5 regional food projects in rural areas enabled researchers to reconstruct the trajectories of the agri-food issue in each area. 2 issues that interest regional stakeholders were also studied by project's researchers: 1) vegetable processing workspaces, a new processing tool but also a new intermediary between producers and consumers; and 2) food justice and social matters.

Regional food projects incorporate and structure a vast array of actions and require means and personnel devoted to them. They're also tools to introduce agri-food and ecological transitions. Their formulation and coherence with other public policies such as regional climate-air-energy plans, for example, are major issues for regions.



FOOD SECURITY AND RESILIENCE IN NOUVELLE-AQUITAINE

In 2016, the Nouvelle-Aquitaine region called upon INRAE to accompany them in implementing the Grand Bergeracois PAT, the region's first PAT. Following this initial collaboration and as part of developing PATs in the region, the *Agriculture de proximité et politiques*

alimentaires locales (or neighbourhood farms and local food policies – APPAL) was set up. The component developed by INRAE researchers assessed the impact of several PATs on local public action and food democracy. Since 2021, the research project *Serealina* has been analysing the sustainability and resilience of food systems, specifically in Nouvelle-Aquitaine.

The role of PATs in these dynamics is developed by the ETTIS unit. These collaborations led to creation of a partnership with the Pays et Quartiers de Nouvelle-Aquitaine. This resource centre, funded by the region, accompanies areas to develop projects including PATs. It has tasked INRAE with supporting discussions with project leaders.

➤ Research and Food Projects: new perspectives

Soon, research began to look at regional agri-food systems, often by studying and participating in innovative local initiatives. With these regional food projects, public authorities hope to give a new dimension to local agri-food systems. Researchers' involvement in this dynamic gives actors an informed perspective over the course of time by analysing and accompanying local collective dynamics.

Studies have made – and continue to make – it possible to develop numerous methods and tools with various aims: diagnostic, simulation, monitoring and assessing. Envisaging the connections, complementarities, specificities and perspectives of these tools is a research challenge to better formulate, pool and make durable the data, knowledge and analyses. Another of the scientists' aims is to make more visible these public action support tools so that they become more usable and used by food policy leaders. The operationality and availability of these tools developed by research are often long and complicated. Access to public databases is sometimes difficult to obtain and the *General Data Protection Regulation* (GDPR) governing personal data processing has made the process of obtaining data and making these tools available even more complicated.

Assessment through researching regional agri-food transitions, especially in the context of regional food projects, sheds light on the progress and limitations of these new dynamics. In late 2022, a collective of 28 INRAE researchers from the ACT Department produced a position paper on researchers' experiences accompanying and analysing the collective dynamics arising in areas with regard to agri-food systems, particularly in the context of the PATs. This work, which forms part of a RnPAT (national PAT network) publication, has, among other things, shown that the involvement of a multitude of actors in these projects promotes 'institutional and social innovation'. Nevertheless, governance arrangements, and in particular the absence of civil society and economic actors in decision-making, do not allow for lasting change to the systems.

Certain avenues still need to be explored in greater depth, especially actions promoting social justice and food solidarity, issues that have been exacerbated by the Covid-19 crisis. For this to happen, experimenting with innovative measures such as food social security, for example, means that research needs to be mobilised in partnership with the regions to accompany and assess these approaches. ■

References and sources

Marchand F., Chabanet D., Projets alimentaires territoriaux « Plus vite, plus haut, plus fort ». July 2022.

Darrot C., Maréchal G., Bréger T., Rapport sur les projets alimentaires territoriaux (PAT) en France : état des lieux et analyse. 2019.

Chiffolleau Y., Loudiyi S., Wallet F., Baritoux V., Barataud F., Dourian T., Duvernoy I., Gonçalves A., Lamine C., Melot R., Morel K., Perrin C., Sanz Sanz E., Schott C. Des actions collectives pour l'alimentation locale aux projets alimentaires territoriaux : entre innovations et déceptions. 2022.

Corade N., Lemarié-Boutry M., Les projets alimentaires de territoire : entre reconfiguration des territoires et nouvelles relations villes/campagnes, 2020.

Ministère de l'Agriculture et de la Souveraineté alimentaire. Près de 400 projets alimentaires territoriaux (PAT) reconnus par le ministère au 1^{er} janvier 2023.

Scientists' testimonials and interviews with: Yuna Chiffolleau, Nathalie Corad, Nicolas Dumoulin, Isabelle Duvernoy, Sylvie Huet, Claire Lamine, Salma Loudiyi, Sophie Madelrieux, Caroline Méjean, and Sophie Nicklaus. Seminar « Outils de diagnostic territorial des systèmes agrialimentaires » de la grande orientation scientifique 3 du département ACT. January 2023.

Regional Information Systems

GLOBAL APPROACH

A système d'information dédié aux territoires (an information system dedicated to regions (SIDDT), for a global diagnostic

<https://siddt.inrae.fr/>

LESSEM Unit

Operational

Developed from 2005, the *système d'information dédié aux territoires* (IT system for regions - SIDDT) carries out regional diagnostics. The data feeding this tool is collected from various sources (INSEE, including the Sirene database; Agreste, including the agricultural census [RA]; IGN, including the graphic plot registry [RPG]; Agence Bio; SITADEL, etc.), and then consolidated and linked to provide automated analyses.

Accessible free of charge online, it enables a wide range of stakeholders to produce summarised indicators to aid decision-making (figures, graphs, interactive maps, etc.), based on the 1,200 pieces of information available per municipality. SIDDT covers mainland France and will soon be extended to the overseas departments and territories.

It offers the possibility of tailoring the area of study from a list of municipalities or official zoning. It is also possible for users to integrate their own data to supplement the analysis. In addition to RA, RPG, Sirene, and Agence Bio data, it can also calculate, for example, the time it takes to access food shops.

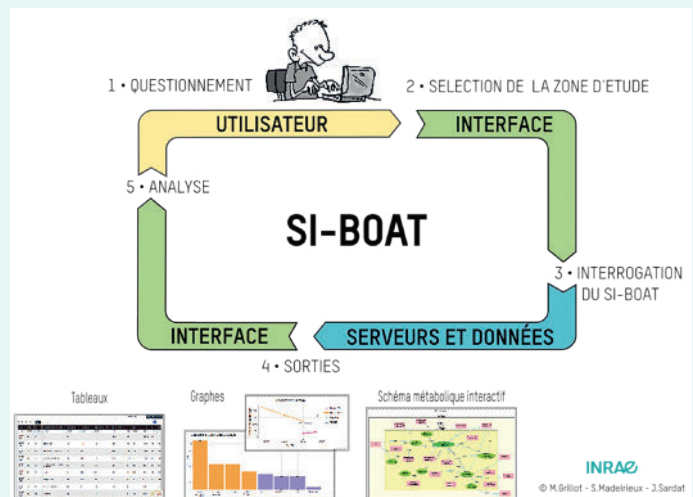
A système d'information pour un premier diagnostic du système agri-alimentaire d'un territoire (an information system for an initial diagnosis of a region's agri-food system) (SI-BOAT)

<https://siddt.inrae.fr/siboat>

Agir & LESSEM Unit

Operational

The SI-BOAT works on principles similar to those of the SIDDT. It provides insight into the agricultural dimensions and value chains of agricultural production in a given region. It gives access to four aspects of AFSs: stakeholders and flows, regional roots, autonomy, and footprints. By providing data in the form of indicators, but also by allowing data to be exported to calculate other indicators or map them, SI-BOAT enables users to make use of national data already available in the region on these aspects. This is a first step towards a more comprehensive diagnosis, which will require local expertise and data.



CHARACTERISING FOOD BEHAVIOURS

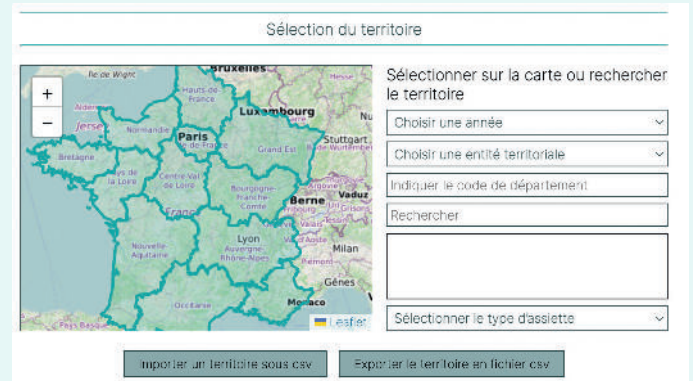
A digital tool to diagnose and model a population's eating habits

SADAPT Unit

Under development

The objective of POPCORN, the network for research into populations and their eating habits in urban areas, integrated into the meta-programme *Bioéconomie pour les territoires urbains* (BETTER, or Bio-economy for urban areas) is to quantify and characterise the food consumption of an area's population in order to establish links with material flows, from agricultural production to waste and emissions.

To do this, researchers are developing a diagnostic tool for food consumption on municipal and supra-municipal scales. Based on public data integrated into a single database, this Web tool makes an overall analysis of consumption in an area. It provides a census of consumers according to different



categories with regard to their presence in the area and supplies indicators on the socioeconomic context. Researchers are also developing a mapping interface to select the area and visualise results. Still under development, this tool is currently reserved for consortium researchers.

EXPOSING FOOD INSECURITY

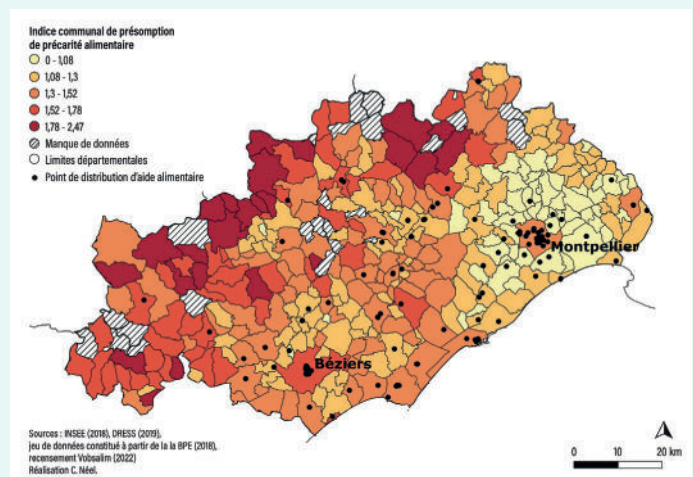
A tool for diagnostics and regional dialogue about food accessibility

Innovation Unit

Under development

In order to support public and associative actors in organising a regional dialogue about inequalities in accessing food and to carry out adapted initiatives, INRAE researchers are developing a diagnostic tool for factors in food insecurity on the municipal scale.

Initially designed within the framework of the Vobsalim34 project set up by the Hérault Department in partnership with the UNESCO Chair in World Food Systems, this tool is currently being adapted to the national scale with the development of an open-access platform that allows actors to obtain a diagnosis for a chosen perimeter.



Observatories

CONNECTING PRODUCTION AND CONSUMPTION

L'observatoire des systèmes alimentaires territorialisés (Regional food systems observatory) (ObsAT)

<https://obsat.org>

Innovation Unit

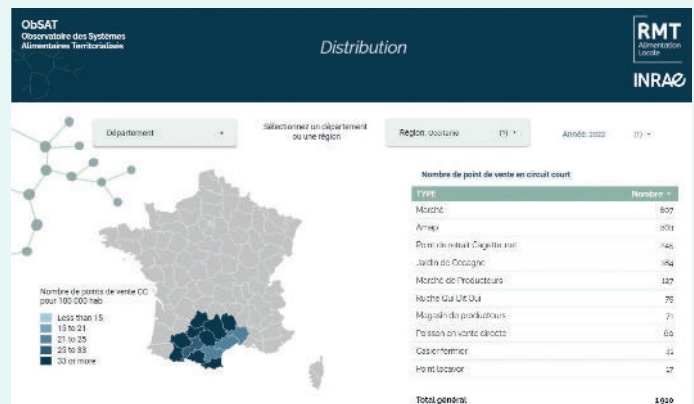
Operational

The ObsAT's mission is to meet the needs of public food policy actors as well as the needs of agricultural development, teaching and research actors. It enables them to access data to implement actions that are coherent with regional needs and constraints.

Established in the wake of the READY project, ObsAT studies 3 dimensions of AFSs: production, processing and distribution. The tool has been adapted at the regional level in the form of the PAT'OC tool for Occitan PATs.

The observatory provides analysis of regional food systems at various aggregate levels, such as public establishments for inter-municipal cooperation (EPCI), departments and regions. The diagnosis provided is based on several types of data: public data and data from partnerships. It is thus able

to provide aggregate data in the form of interactive maps, graphs, ratios, etc. The raw data cannot be downloaded, but some data can be obtained upon request. The observatory is available online, free of charge, and does not require logging into the local RMT network website.



ANALYSING AGRICULTURAL PRODUCTIONS

Observatoire des systèmes agri-alimentaires en transition à l'échelle d'un territoire (Observatory of agri-food systems in transition at regional scale) (ReGATERR OFALIM)

Aster Unit

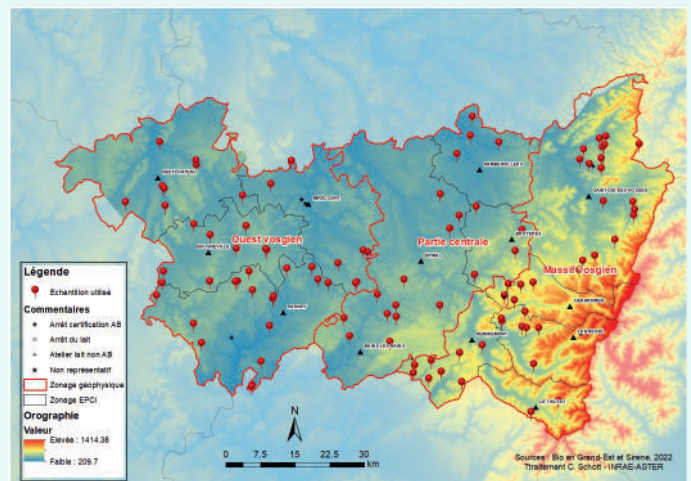
Under development

The aim of the OFALIM (regional food flows observatory) project is to make an inventory of and analyse actors in an area's agri-food system and their interactions. It is based on the ReGATERR® tool (geolocated census of farms in transition across the territory), whose methodology and database were the subject of a declaration of invention and exploitable results in early 2022. This tool meets needs for the diagnosis, management and, ultimately, assessment of the impact of regional food policies.

The geolocated database matches multiple datasets on farms (public or web-based scraping), which can be supplemented by field surveys. It provides statistical analyses and indicator representations, as well as various types of mapping according to user needs.

OFALIM is still in the testing phase. It will be co-developed and tried out in the Vosges department in partnership with the Pays de la Déodatie PAT and there are plans to develop

a digital interface for the tool. Currently used in-house by INRAE, the prototype has been improved, particularly in terms of modelling, with the addition of representations of agricultural and food flows between operators.



Modelling and Simulation Tools

ANALYSING AGRICULTURAL PRODUCTIONS

RPG Explorer, a detailed analysis of agricultural dynamics

<https://rpg-explorer.fr/>

SADAPT Unit

Operational

RPG Explorer is a tool for analysing and exploring agricultural dynamics. It uses data from the graphic land-plot registry (RPG), a reference database for assessing Common Agricultural Policy (CAP) aids. The tool can be used to analyse the plot structure of farms in a given area. Depending on the level of information in the data, RPG Explorer can provide an analysis of crop rotation, crop sequences and framework rotations in an area, as well as indicators on the farm's structure.

The software can be obtained free of charge by contacting the RPG Explorer team at the UMR SADAPT (rpg-explorer@inrae.fr). Getting started is facilitated by face-to-face training courses (three courses per year), which will soon also be available online. The RPG Explorer software has not yet been used for PATs, but can be a useful diagnostic tool.



GéoPAT for land-plot evolution scenarios

<https://lisc.inrae.fr/geopat/>

Lisc Unit

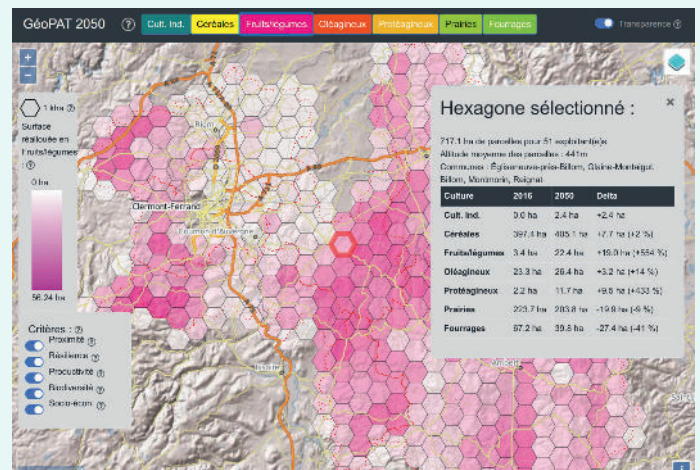
Operational

The GéoPAT tool, developed as part of the Clermont Innovation action-research project, makes it possible to identify evolution scenarios for farmland plots with regard to PAT objectives.

Using the 2016 RPG (graphic land-plot registry), the tool makes it possible to reallocate crops, plot by plot, to create a potential scenario for 2050. Selection criteria for scenarios have been drawn up with stakeholders in the Grand Clermont/PNR Livradois-Forez regional food project: productivity, proximity, social, resilience and biodiversity. Using the data and method for the area of study, 2,150 potential scenarios can be suggested.

A Web application to visualise results geographically is accessible free of charge.

Although this tool is limited to the Grand Clermont and Livradois-Forez RNP, the methodology developed could be used to deploy the tool for other regions.



A tool for local agricultural production potential to support land-use planning

Écodéveloppement Unit **Under development**

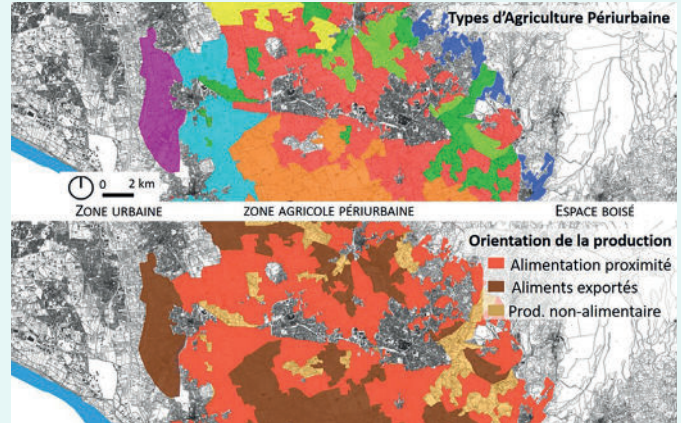
The Unité Écodéveloppement (Ecodevelopment Unit) conducts research with the aim of characterising the forms and locations of farming that contributes to local supply chains.

These studies gave rise to the development of a patented method to estimate local agricultural potential using the definition 'unités spatiales d'agriculture périurbaine' (spatial units of peri-urban agriculture) (USAPU). This method led to the creation of a forecasting tool for farmland use and the characterisation of types of peri-urban farming according to their potential reactivity to local public intervention (town or inter-municipalities). Already tested in the Vaucluse Department, a generic prototype for operational land-use planning has also been developed in partnership with the SAFER (France's Land development and rural settlement companies) and tested on a municipal scale in Provence-Alpes-Côte d'Azur and Poitou-Charentes.

This model tests hypotheses verifiable in the field using measurements from demographic, geographic and remote-sensing data, generating mapping adapted to preexisting

administrative boundaries. The methodology thus offers public policy support relating to land use and regional development and could be used in the context of regional food projects.

Currently used in-house by INRAE, the prototype is undergoing improvements, particularly in terms of refining scales in order to adapt it to the constraints of operational land planning and to the needs of end users.



MAKING THE CONNECTION BETWEEN PRODUCTION AND CONSUMPTION

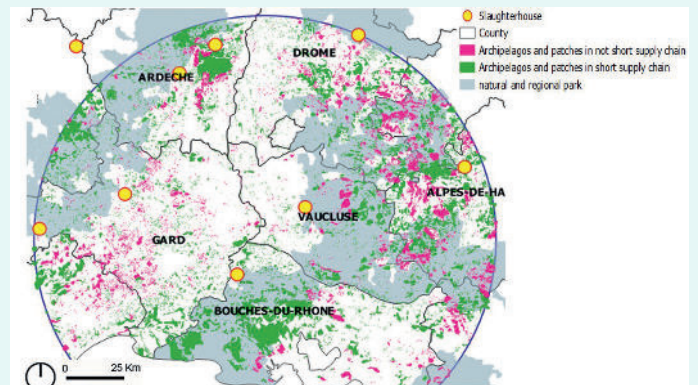
Tool to assess local supply potential

Écodéveloppement Unit **Operational**

The Unité Écodéveloppement research to characterise forms and locations of farming that contributes to local supply chains has also been carried out on the foodshed level. This approach provides useful knowledge for cities' institutional action, in this case, the relocation of supplies for school canteens in the city of Avignon, combining field surveys, geomatics analyses and statistical modelling.

More specifically, these studies make it possible to estimate, quantify and locate connections between agricultural diversification and food availability within a reasoned proximity area and can be used in regional food policy. For example, the mapping produced will be used in a participatory workshop

organised by Avignon's Living Lab to develop local beef supply chains for canteens.





Direction de l'Appui aux Politiques publiques
Centre siège d'Antony
1, rue Pierre Gilles-de-Gennes
92160 Antony

Rejoignez-nous sur :



<https://app.inrae.fr/>

**Institut national de recherche pour
l'agriculture, l'alimentation et l'environnement**



**RÉPUBLIQUE
FRANÇAISE**

*Liberté
Égalité
Fraternité*

INRAE